



HONG KONG - LOS ANGELES - NEW YORK - PARIS - SHANGHAI

SAVE THE DATES

SPINEXPO™ SHANGHAI

25-26-27 FEBRUARY 2025

WORLD EXPO EXHIBITION & CONVENTION CENTER

1099 GUOZHAN RD, PUDONG - SHANGHAI - CHINA



YARNS – FIBRES – KNITWEAR – KNITTED PRODUCTS

SPINEXPO™ is a professional event specializing in the yarn and knitwear textile sectors, with applications in ready-to-wear, knitted accessories, weaving, and activewear.

With events on three continents, it showcases an exceptional selection of spinners, knitwear manufacturers and studios offering a “one-stop-shop” solution, from design to production, for small volumes and industrial-scale production.

PRE-REGISTRATION IS MANDATORY

NO REGISTRATION ONSITE

WWW.SPINEXPO.COM

HOURS OF OPENING:

25-26 FEBRUARY 2025: 9.00 AM - 6.00 PM

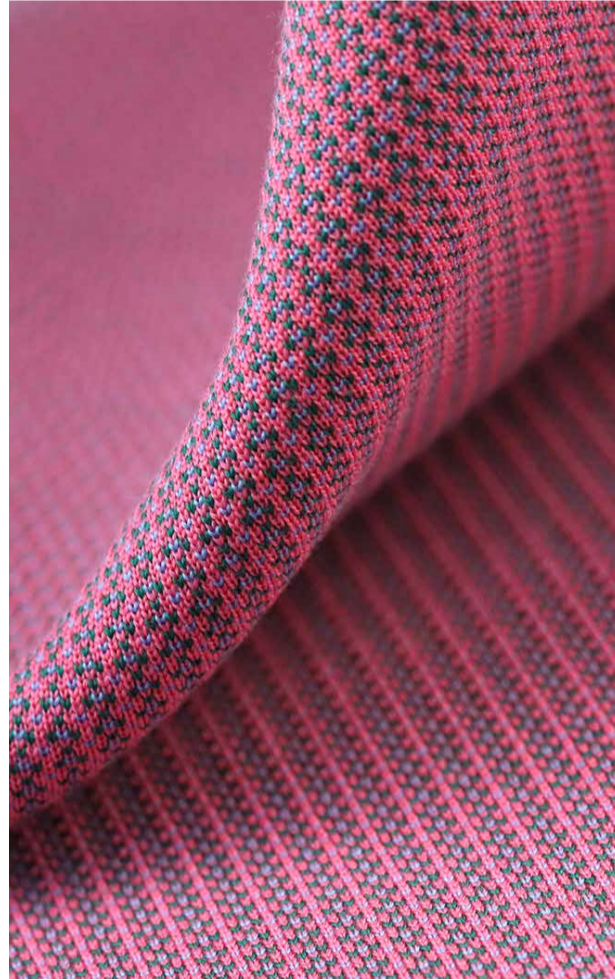
27 FEBRUARY 2025: 9.00 AM - 4.00 PM

XINAO

Innovating yarns for a wider stage – Xinao embraces home textile yarns.



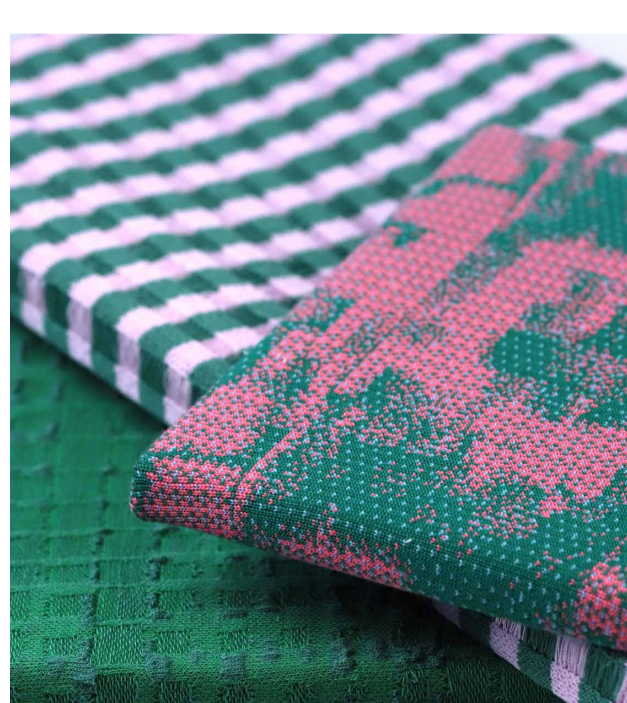
In 2022, under the guidance of XINAO Multi-Filed development, XINAO GROUP established a new team dedicated to innovating yarn development. Focusing on quality selection, efficient utilization, and long-term development planning, the team is committed to exploring wool's diverse fashion applications, thus initiating the research, development, and production of home textile yarns.



XINAO is dedicated to collaborating with leading enterprises in the industry to produce products that rival international standards, offering customers a wider range of product choices. XINAO home textile yarns are primarily based on Merino wool and include blends such as wool-silk, wool-nylon, and wool-acrylic. The company has also pioneered the application of various animal fibers like British wool, mohair, and alpaca in the home textile field.

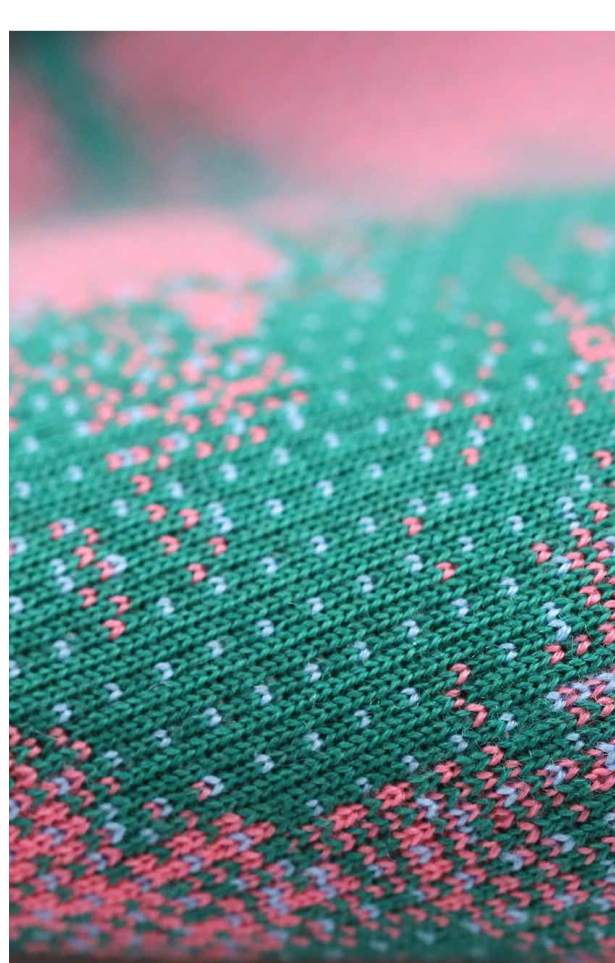


In product development, XINAO leverages wool fibers' natural, renewable, wrinkle-resistant, breathable, antibacterial, odor-control, soft and elastic, fire-resistant, and UV-resistant properties. According to the demands of different consumer markets, the company develops new materials, optimizes spinning processes, enhances yarn performance, and collaborates with industry partners to create a variety of products: boiled wool series possesses a subdued and sophisticated texture along with a comfortable touch, making it suitable for upholsteries such as sofas, curtains, and panels (which can enhance acoustic effects); the mohair pile fabric series, with its smooth and soft touch as well as good resilience and support, is ideal for sofas, cushions, and other upholsteries; the wool-nylon blended series, featuring elegant marbling effects and versatile styles, can be used for a variety of products such as sofas, chairs, panels, and more.



In the future, Xinao will keenly observe market demands, enhance product performance, expand product categories, broaden application scenarios, and work hand in hand with industry partners to explore more possibilities for natural fibers in the home textile field.

At the SPINEXPO™ Shanghai SS 26 session, articles will be introduced: 100% wool felted fabric finish, presented in 140 cm width, weight 460f/m², with an appealing mélangé effect for use on panels. With a light fastness of Standard 5 (ISO 105-B02) and EB 1021-1 flammability, Sonus is the enhancement for a range of vertical surfaces.



PREREGISTRATION IS MANDATORY

CHECK OUR WEBSITE: WWW.SPINEXPO.COM