

SAVE THE DATES

SPINEXPO™ SHANGHAI

25-26-27 FEBRUARY 2025

WORLD EXPO EXHIBITION & CONVENTION CENTER

1099 GUOZHAN RD, PUDONG - SHANGHAI - CHINA

HOURS OF OPENING:

9.00 A.M. TO 6.00 P.M. (27 FEBRUARY: 4.00 P.M.)



SPINEXPO™ is an international event bringing top-class spinners and integrated high-fashion knitwear manufacturers. It caters to knitwear, weaving, hosiery, socks, shoes, home textile, and technical sectors.

YOU CAN PREREGISTER ON THE WEBSITE

WWW.SPINEXPO.COM

PRE-REGISTRATION IS MANDATORY.

NO REGISTRATION ONSITE.

The show welcomes many spinning or knitting companies who renew the show's offering.

SPINEXPO™ presents some of them:

HASEGAWA

The company continuously introduces new equipment to develop more fancy yarns.

HASEGAWA attaches great importance to yarn development.



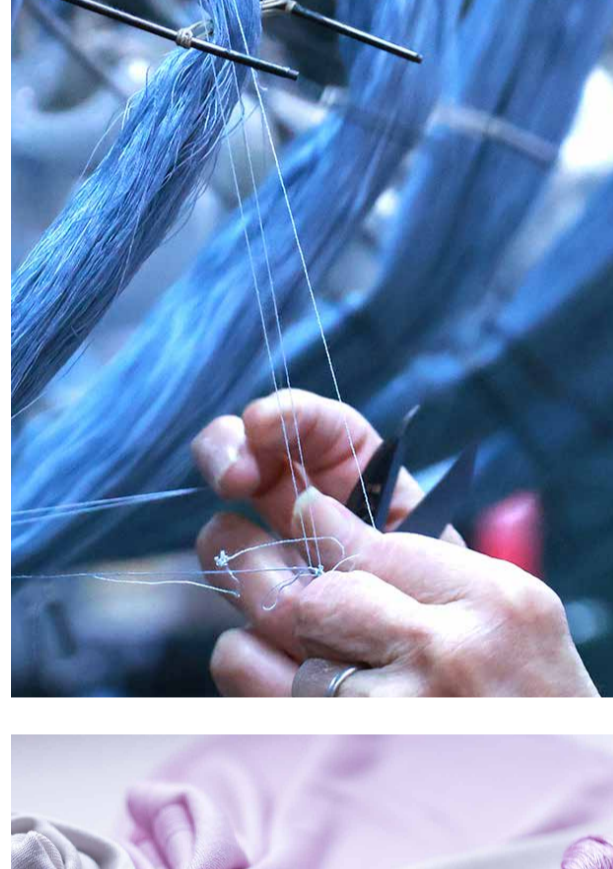
Spinning mill in focus:

HASEGAWA was founded in 1965 by entrepreneur Hasegawa Masaru in Ichinomiya, Aichi Prefecture, Japan. Since its inception, the company has been processing and selling mulberry silk (spun silk). At a time when most of the Japanese silk industry was selling Japanese kimono silk, Hasegawa Masaru opened a new route in the direction of fashion. The "knitting fever" was rising in the Japanese fashion market then. HASEGAWA also began introducing various fancy yarn machines and developing fancy yarns mainly based on silk. At the same time, HASEGAWA began to expand overseas markets.

The company has continuously introduced new equipment to develop more fancy yarns. HASEGAWA has permanently attached great importance to yarn development. So far, more than 10,000 types of yarn have been developed, and thousands of yarns are still active in the first line. More than 100 new yarns are created every year.

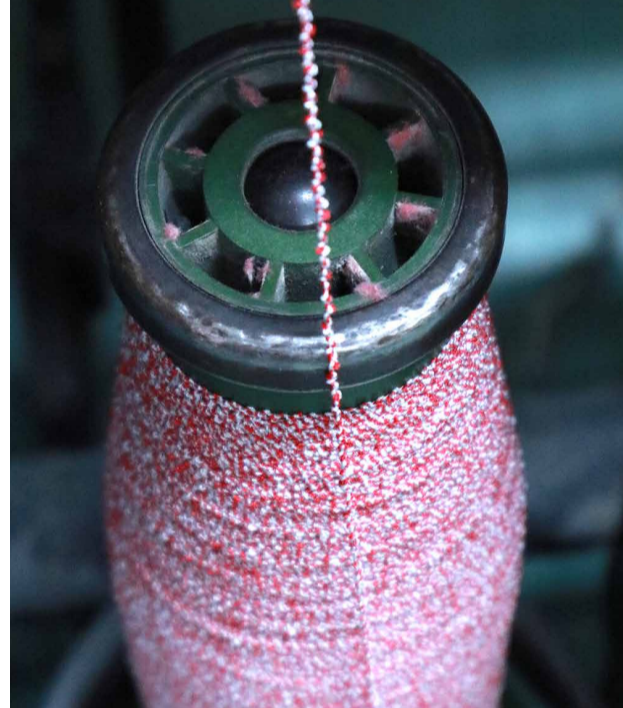
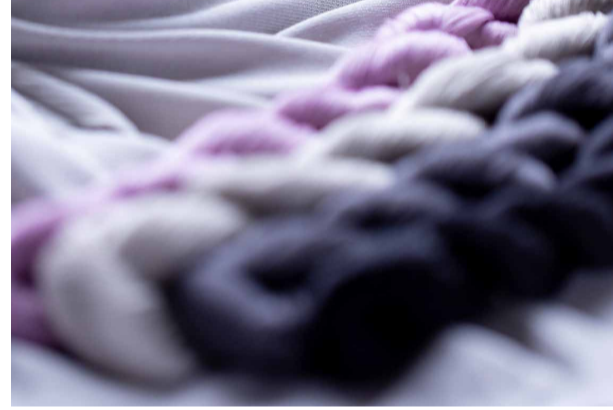
Yarn quality

HASEGAWA's yarns are based on using only natural fibers, which account for more than 95% of all its yarns. Two aspects are the core of HASEGAWA yarns. One is the pursuit of excellent quality yarns. HASEGAWA mainly focuses on silk categories, and its strengths are mulberry silk and tussah silk. Today, with the rising prices of raw materials, HASEGAWA adheres to its consistent strategy and develops the highest grade of silk to the extreme. The other is to develop and innovate new yarns continuously.



Factory introduction

Japanese factories often use craftsmanship to express their pursuit of product quality. HASEGAWA is one of them. HASEGAWA is located in Bishu, Japan's largest fiber textile production area. The experienced technical staff is the most significant wealth of this yarn factory since various natural fibers such as silk, linen, cotton, and wool are used to develop various types of fancy yarns, and the machines and data for producing yarns are different.



BON/ZEN

This grade uses 100% Kibiso from high-quality cocoons. The Kibiso is scoured; only the longest, thickest, most lustrous fibers are extracted. This is called "Extra A1," the finest raw material for spun silk. The Kibiso is formed into slivers before being turned into yarn. The silk yarn is spun only with the Extra A1 slivers.

BON Series: Solid Colors

This silk yarn is carefully dyed at dyeing mills in Japan. Dyeing is basically performed with reactive dyes. It takes a minimum of eight hours, which is a lengthy processing time. This results in superior color expression and fastness. However, it is a very difficult method of dyeing, as mistakes cannot be corrected.

ZEN: Mélange Color

ZEN is made from "Extra A1" silk slivers. The slivers are dyed in each color and mixed. Spinning the yarn from slivers dyed in various hues yields melange colors characterized by the color's depth and vividness. As the silk is dyed in slivers in the early stage, our attention can be focused exclusively on dyeing the raw silk material. Compared with conventional dyeing of yarn, fabric, textile products, etc., it yields silk yarn with excellent color expression.



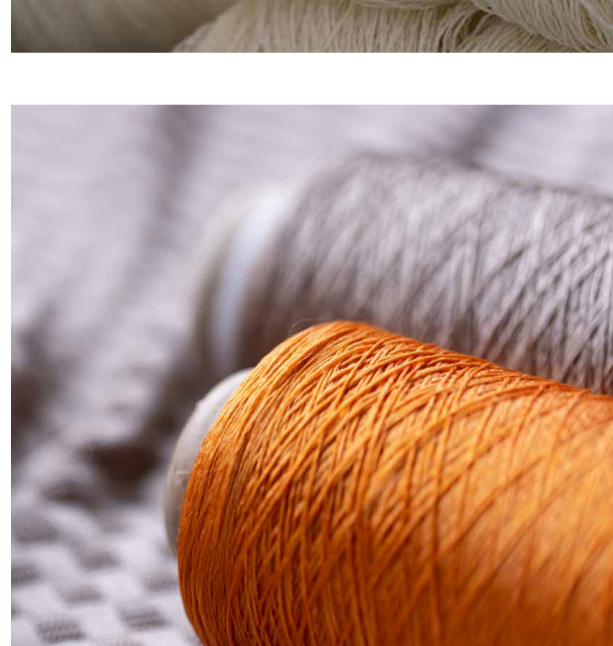
GINGA/SILK TWEED

Hasegawa Corporation employs two silk-spinning methods: air-jet spinning and woolen spinning. Woolen spinning is suitable for GINGA, UNKAI, and Silk Tweed. Air-jet spinning is for Premier and HAKUSAN.

In woolen spinning, we spin the yarn with the composite fibers oriented in various directions, which causes the yarn to lose some luster and creates gaps between the fibers, thus resulting in a soft, bulky yarn. In contrast, air-jet spinning uses forced air to turn the raw material into yarn, producing a yarn that has neps but is tighter with less unevenness.

With little luster and numerous neps, silk noil yarn does not have the typical silk look. Whether dyed as noil or yarn, it has a nep look and unevenness in the yarn, with minimal luster.

Therefore, it is appropriate for creating a tweedy feel and is suitable for casual products. The yarn is also lightweight, as it contains more air, making it ideal for use when a lighter weight is desirable. And since it is not slippery, it is also suitable for socks and other products.



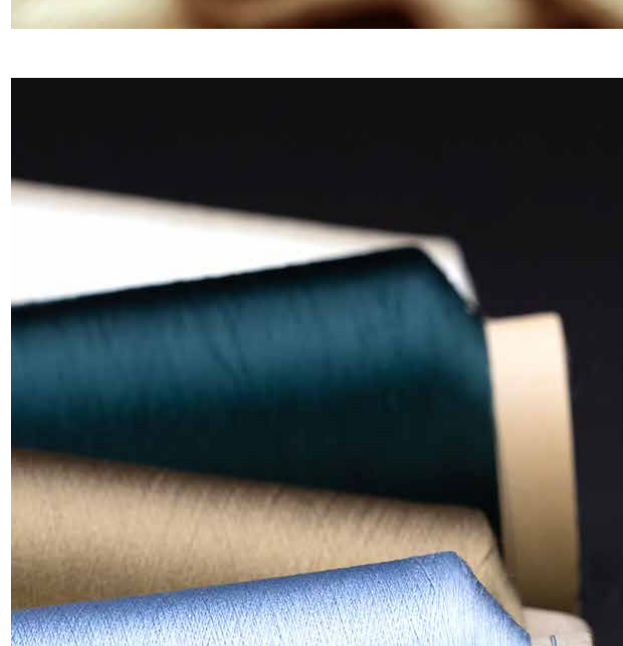
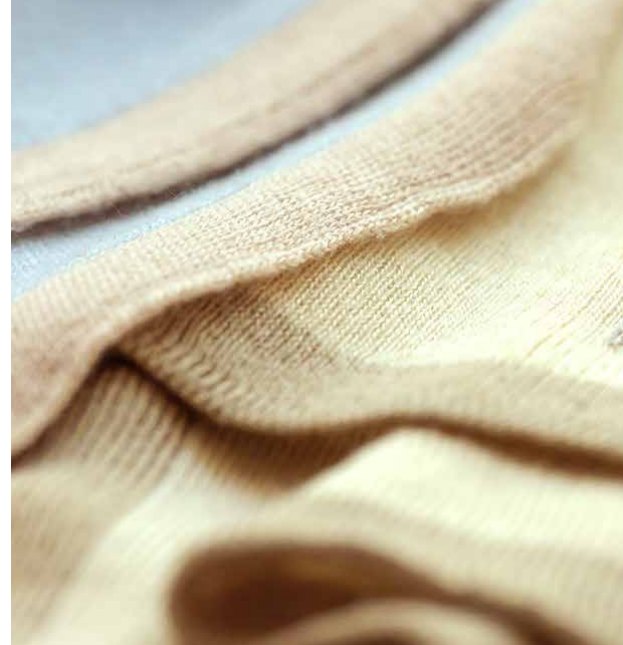
TUSSAH SILK

Silk is generally made from the cocoons of the domesticated mulberry silkworm. In contrast, there is "tussah silk" made from wild silkworms. Tussah is produced primarily in Liaoning Province in northeastern China. The silkworms build their cocoons in a natural environment, which are then collected as the raw material for the yarn.

Compared to yarn from mulberry silkworms, tussah silk yarn is a thicker characteristic of Tussah and uniquely pronounced sheen. Thanks to its exceptional bulkiness, tussah is suited for use in sweaters and other knitted products. The cocoons themselves are brownish, although the individual cocoons' color and shape vary significantly.

We also contract with a mill in Kyoto, just as we do for mulberry silk filament yarn. While it is dyed in the same way as mulberry silk, the scouring and dyeing processes are more complex. As the cocoons of tussah silkworms are brownish, creating beautiful pastel or light colors with this silk requires advanced techniques and expertise. Among the small number of mills that can dye silk, only a few are capable of dyeing tussah silk.

The tussah silk filament yarn's particular luster and bulk make it suitable for luxury knit products. It is often used for mixed knitting and weaving, while we use it in mixed twisted yarn. Combining mohair or wool with the luster of tussah silk filament yarn expresses a sense of luxury and depth of color, making it particularly useful.



PREREGISTRATION IS MANDATORY

CHECK OUR WEBSITE: WWW.SPINEXPO.COM