

SPINEXPO™ TREND WRAP

FIBRES - YARNS - KNITWEAR - CIRCULAR KNIT - HOSIERY



Autumn_Winter 2025 yarns and knitwear trends are presented by way of a wrap of the past session products compilation

SAVE THE DATES

SPRING/SUMMER 2026 COLLECTIONS

SPINCLUBS

NEW YORK

15 & 16 JANUARY 2025

"THE SUITE" METROPOLITAN PAVILION

123 WEST 18TH STREET - NEW YORK - NY 10011

PARIS

21 & 22 JANUARY 2025

BASTILLE DESIGN CENTER

74 BD RICHARD-LENOIR - 75011 PARIS - FRANCE

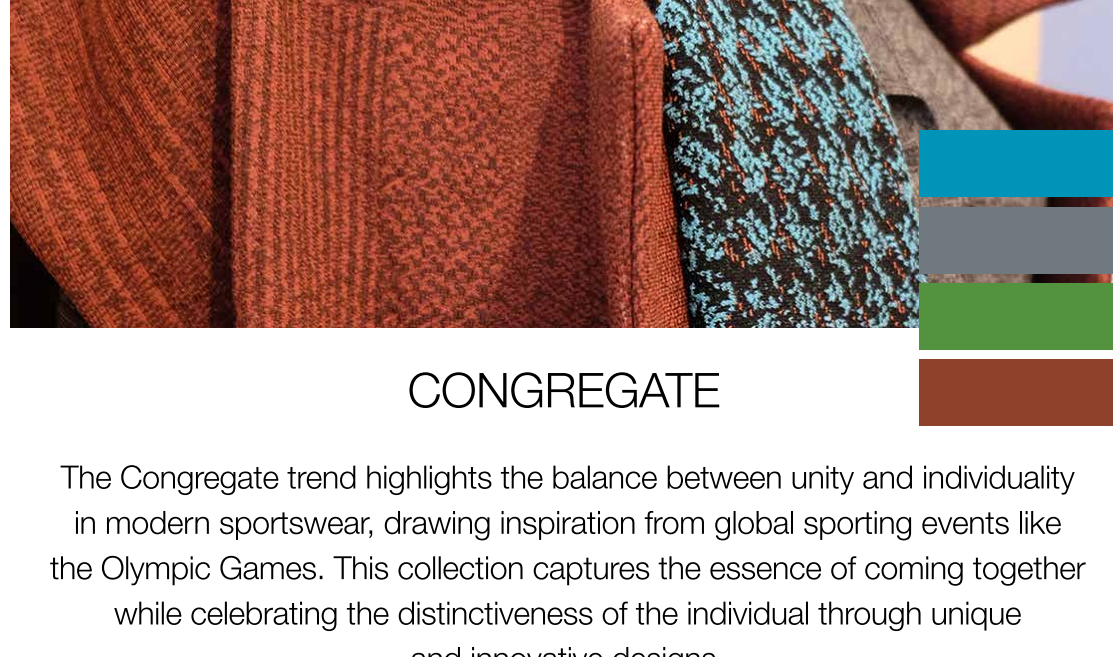
TRADE EXHIBITION

SHANGHAI

25-26-27 FEBRUARY 2025

WORLD EXPO EXHIBITION & CONVENTION CENTER

1099 GUOZHAN RD, PUDONG - SHANGHAI - CHINA

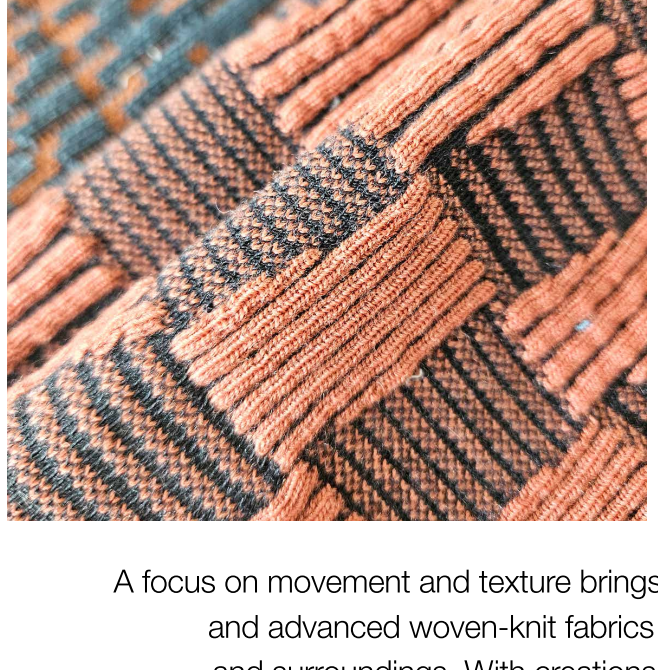
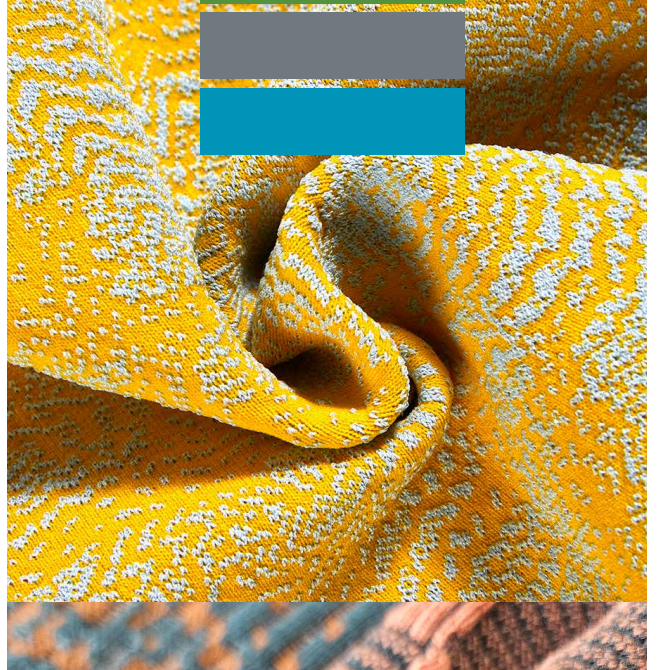
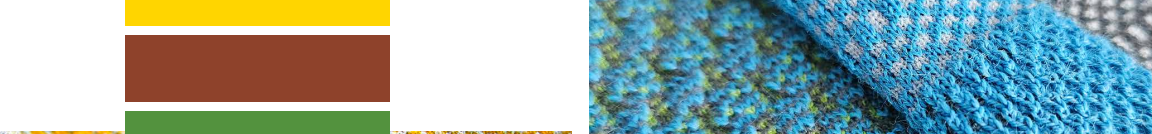
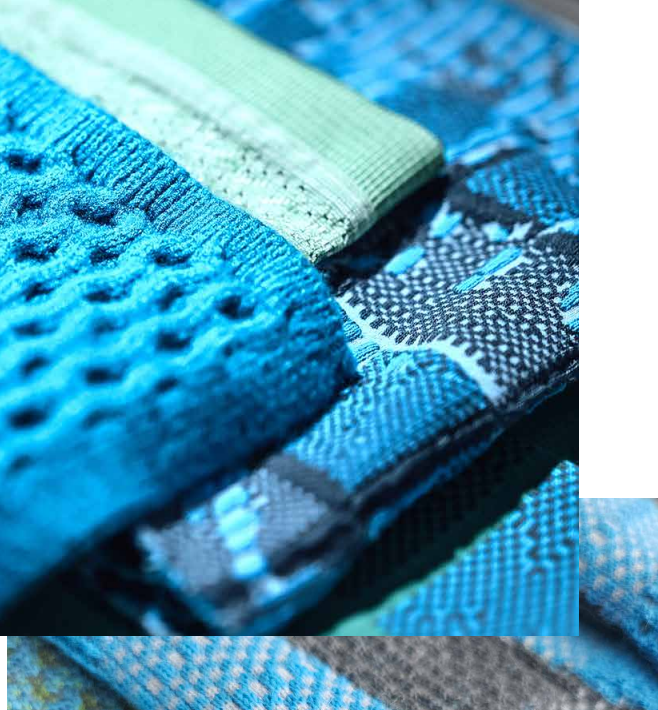
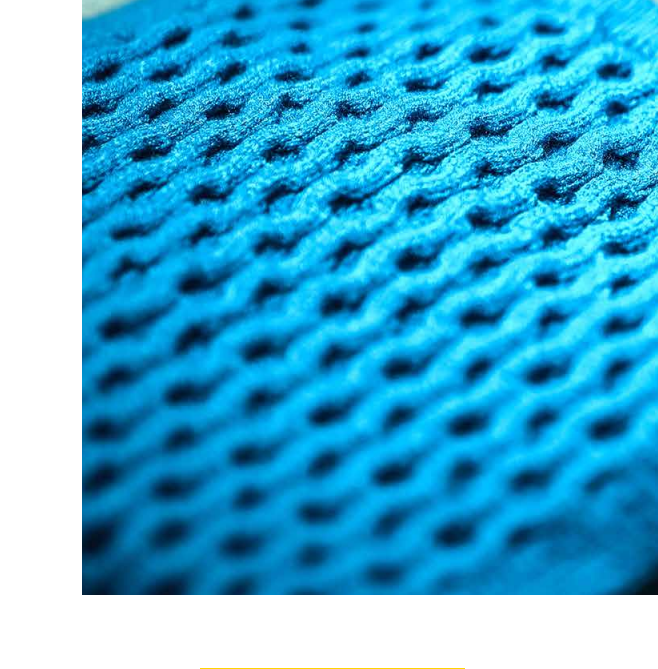


CONGREGATE

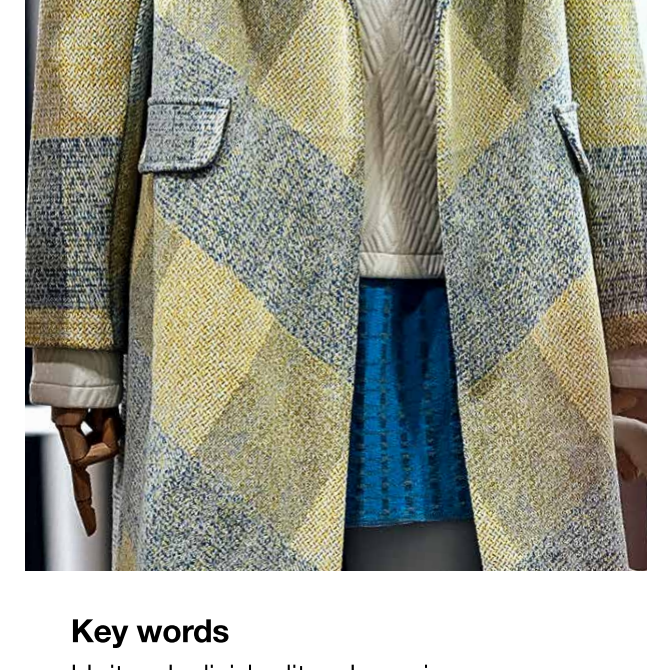
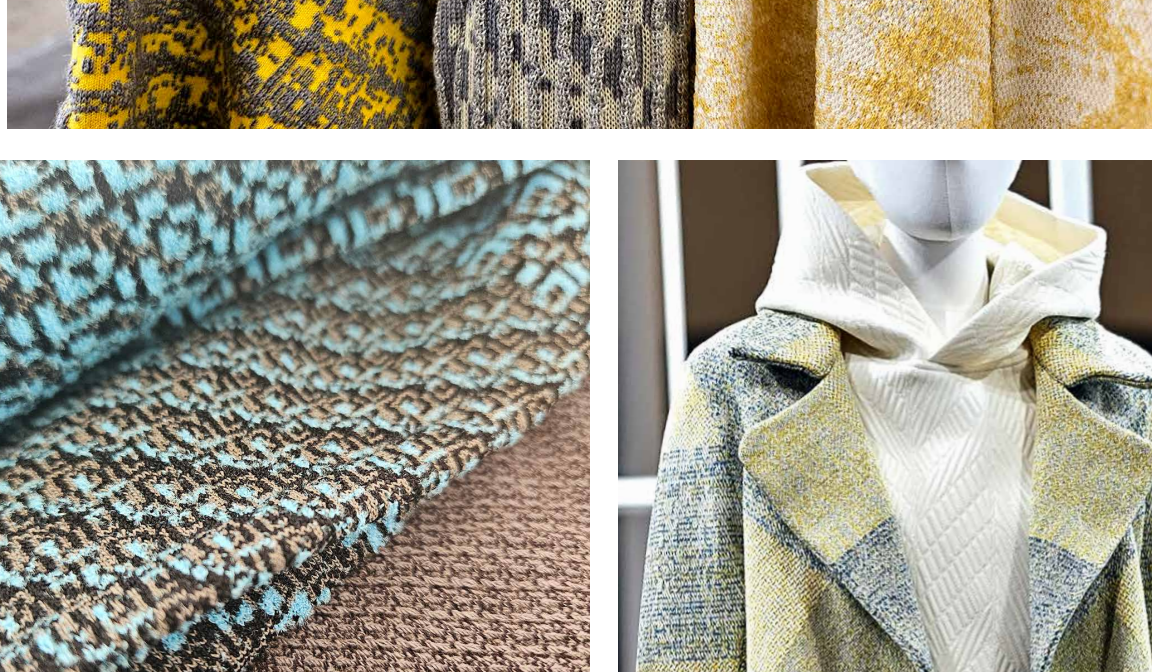
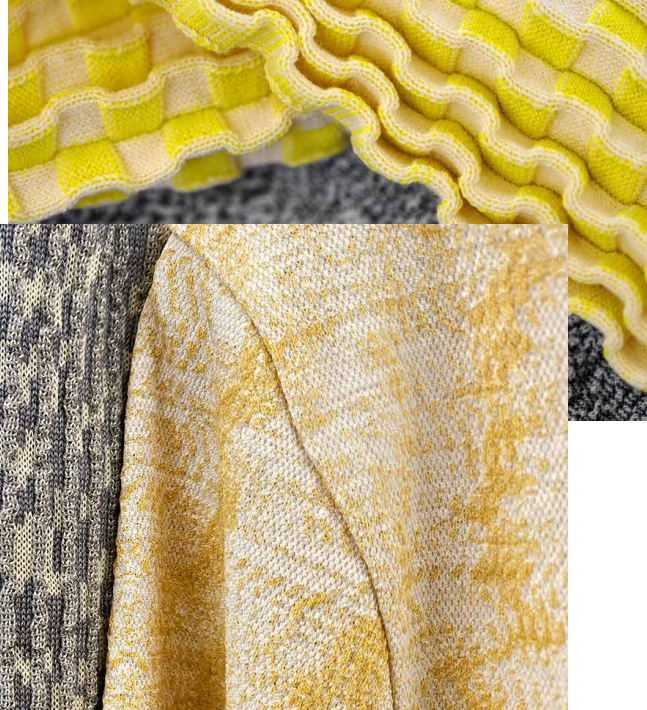
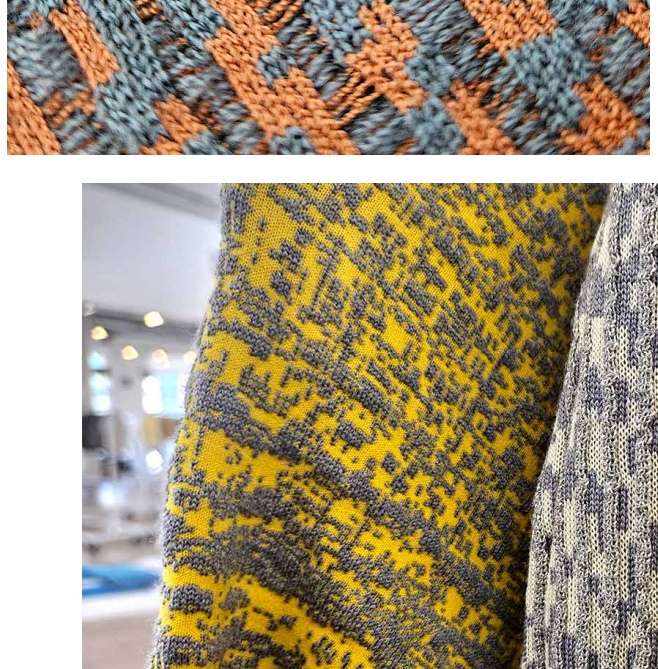
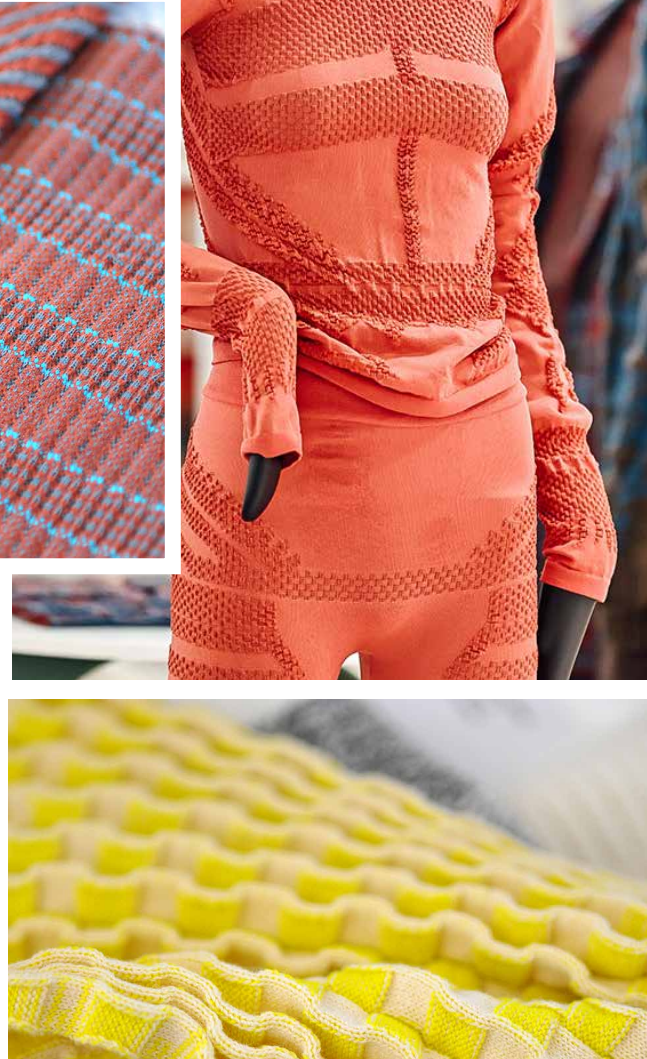
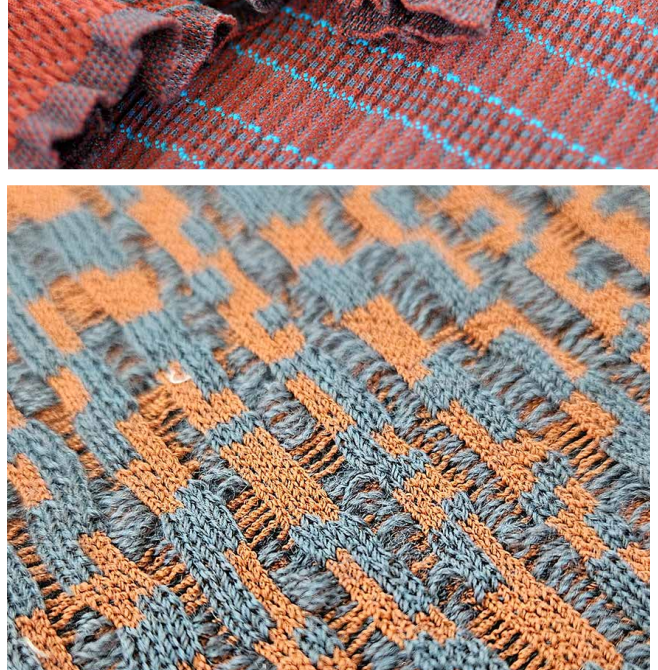
The Congregate trend highlights the balance between unity and individuality in modern sportswear, drawing inspiration from global sporting events like the Olympic Games. This collection captures the essence of coming together while celebrating the distinctiveness of the individual through unique and innovative designs.



At its core, Congregate emphasizes contrast and variety in materials and styles. The collection showcases technological innovation with the use of technical functional yarns in both natural and synthetic components, offering performance and durability. Layering is key, with versatile pieces like tailored jackets, pleated trousers, and casual chinos designed to adapt to both athletic and urban environments, enhanced by the softness of sport boucles.

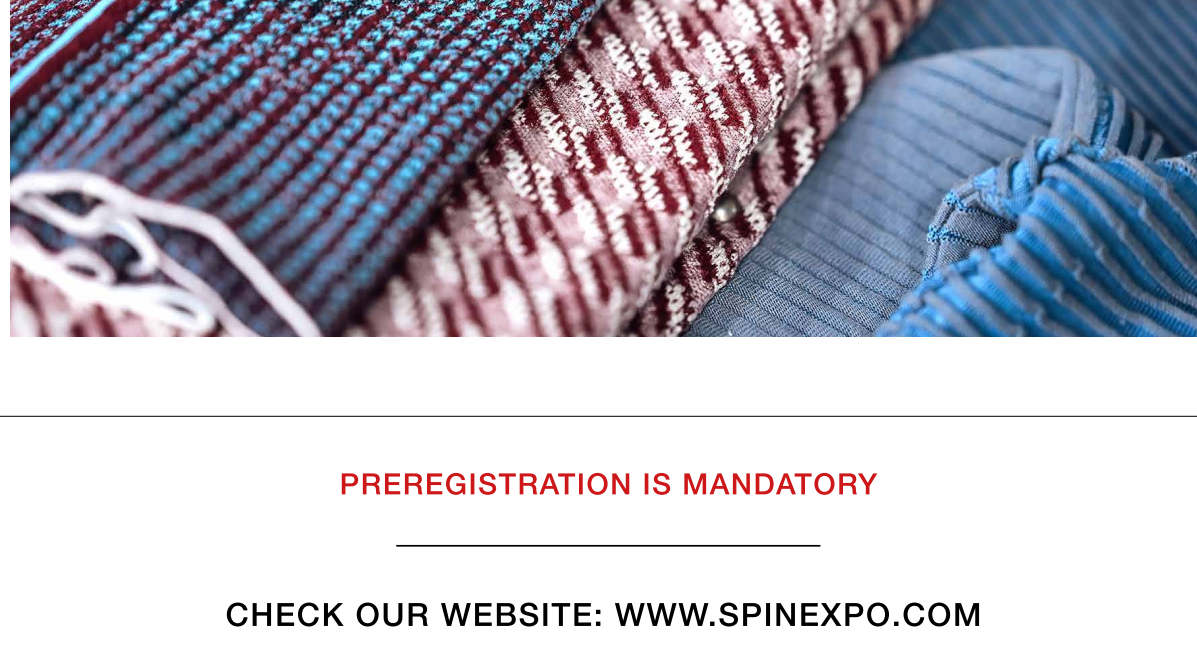


A focus on movement and texture brings this trend to life, integrating micro-stitches and advanced woven-knit fabrics that interact with the wearer's body and surroundings. With creations in both woven and circular knitting, Congregate merges traditional sportswear aesthetics with streetwear elements, creating pieces that are both functional and fashion-forward.



Key words

Unity - Individuality - Layering
Innovation - Movement - Texture
Durability - Performance
Functional - Streetwear



PREREGISTRATION IS MANDATORY

CHECK OUR WEBSITE: WWW.SPINEXPO.COM