

# SPINEXPO™

## TREND WRAP

FIBRES - YARNS - KNITWEAR - CIRCULAR KNIT - HOSIERY



Autumn\_Winter 2025 yarns and knitwear trends are presented by way of a wrap of the past session products compilation

## SAVE THE DATES

SPRING/SUMMER 2026 COLLECTIONS

**SPINCLUBS**

NEW YORK

15 & 16 JANUARY 2025

"THE SUITE" METROPOLITAN PAVILION

123 WEST 18<sup>TH</sup> STREET - NEW YORK - NY 10011

PARIS

21 & 22 JANUARY 2025

BASTILLE DESIGN CENTER

74 BD RICHARD-LENOIR - 75011 PARIS - FRANCE

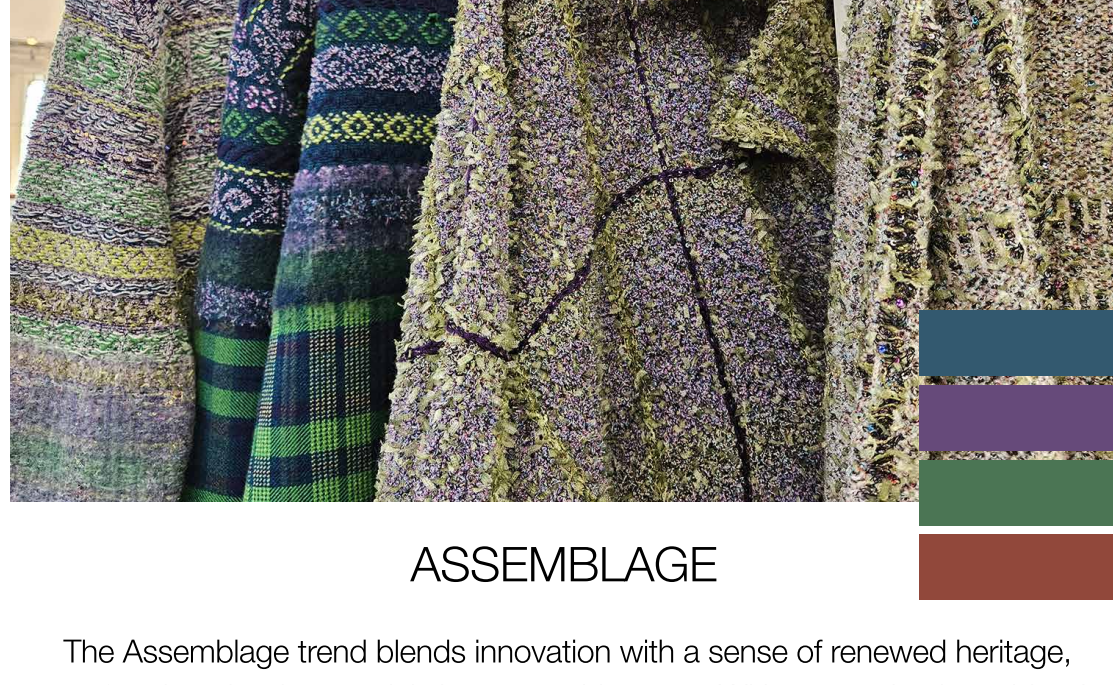
**TRADE EXHIBITION**

SHANGHAI

25-26-27 FEBRUARY 2025

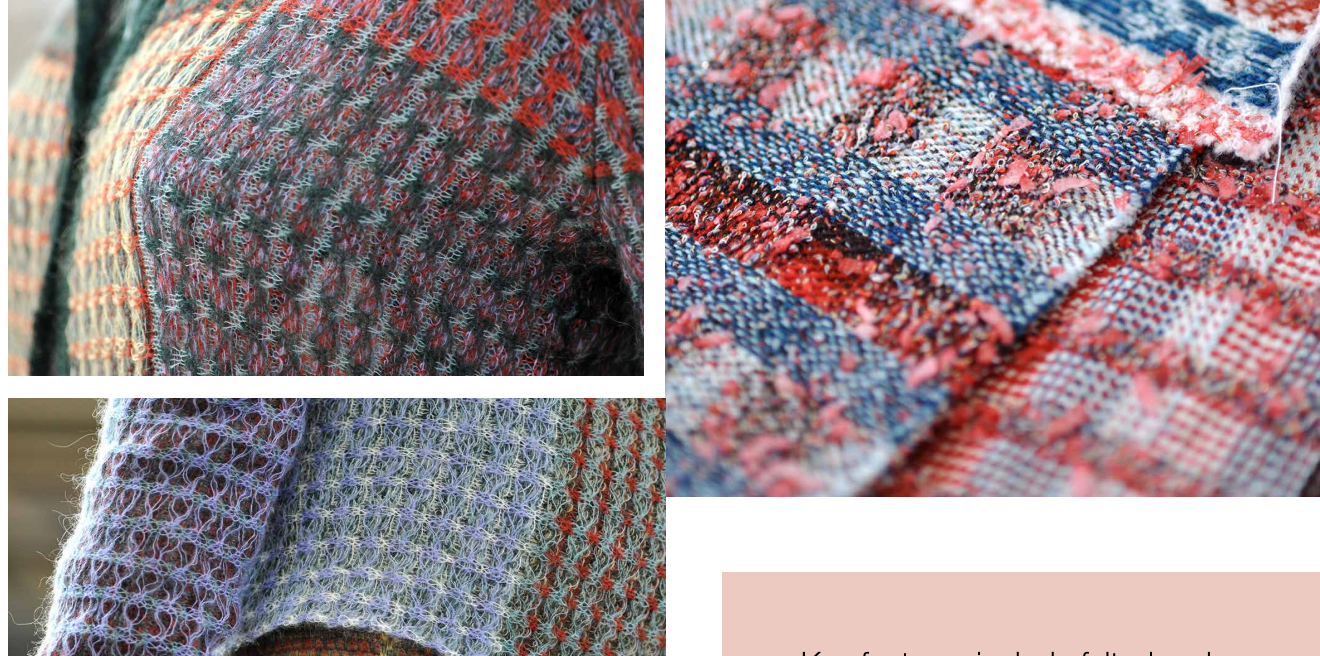
WORLD EXPO EXHIBITION & CONVENTION CENTER

1099 GUOZHAN RD, PUDONG - SHANGHAI - CHINA

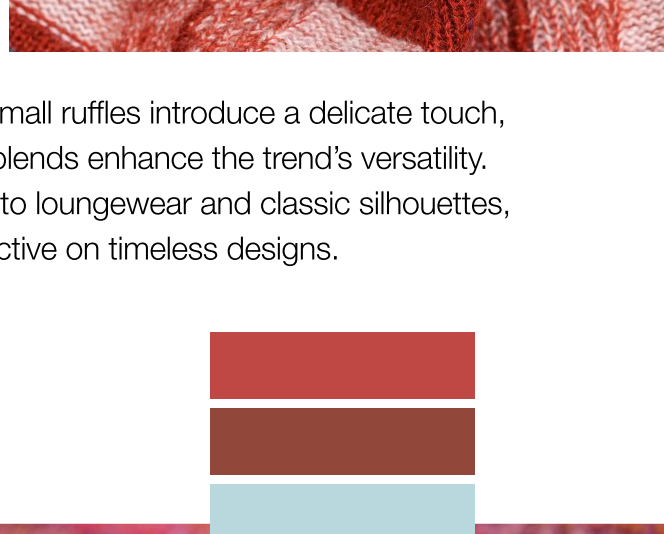
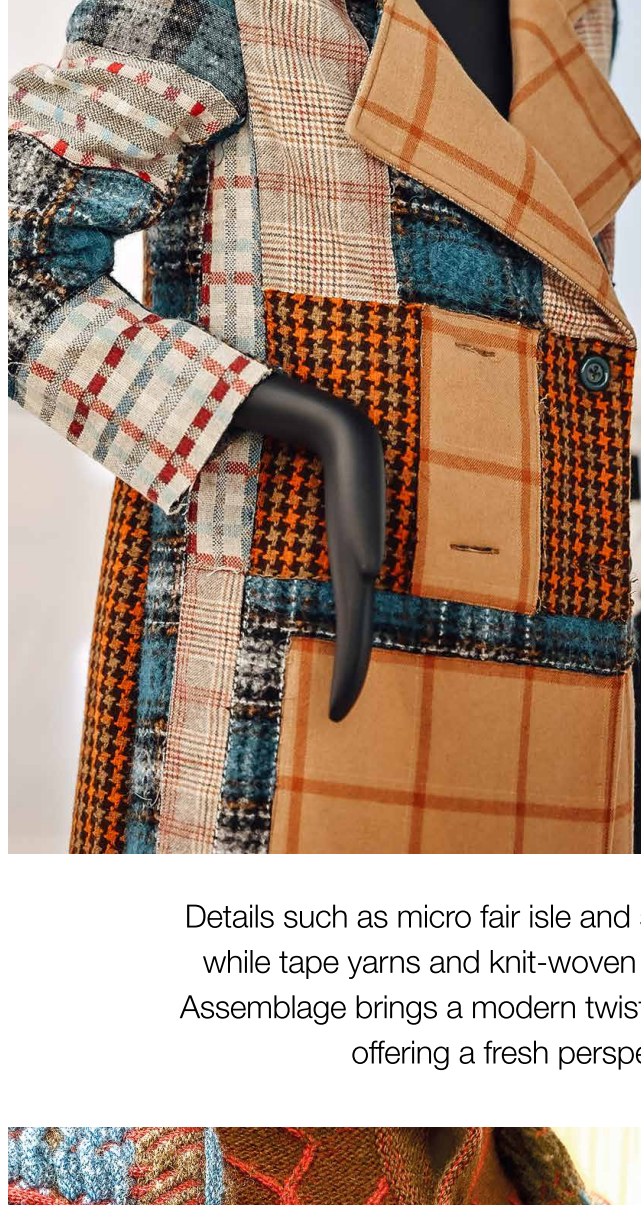


ASSEMBLAGE

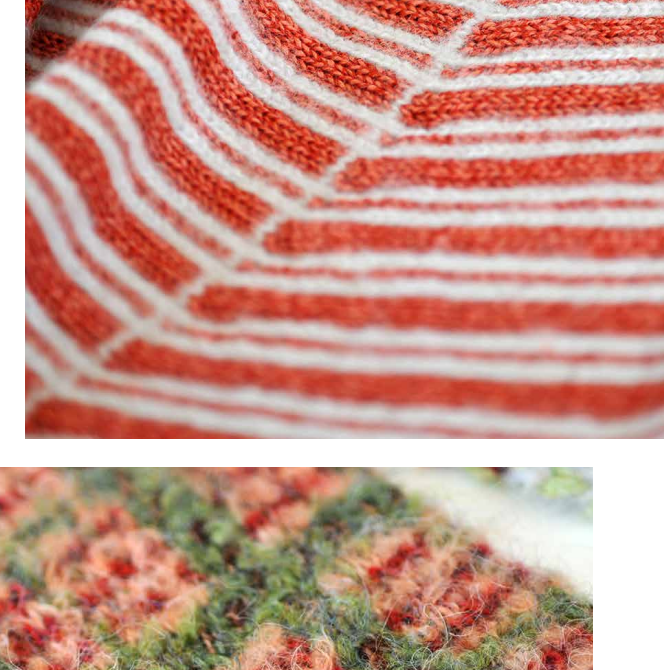
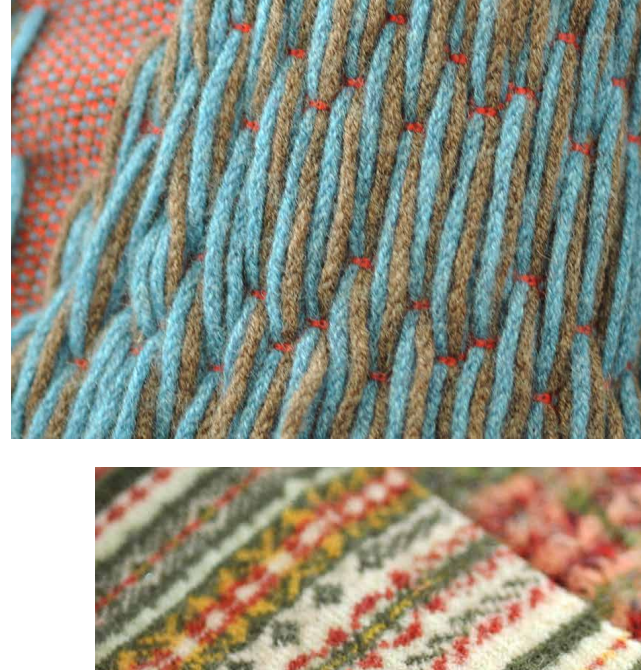
The Assemblage trend blends innovation with a sense of renewed heritage, transforming classic materials into something new. With an emphasis on blends and color combinations, this trend showcases fresh takes on stitches and textile techniques.



Key features include felted ombre effects and textures like fleece and terry bring depth to checks and stripes. A playful mix of warm and cold color blocks alongside microstructures in checks adds dimension to both casual and elegant pieces.



Details such as micro fair isle and small ruffles introduce a delicate touch, while tape yarns and knit-woven blends enhance the trend's versatility. Assemblage brings a modern twist to loungewear and classic silhouettes, offering a fresh perspective on timeless designs.



**Key words**  
 Patchwork - Hybrid designs  
 Layered textures - Deconstructed  
 Subtle sheen - Contrasting finishes  
 Geometric motifs - Textural depth  
 Multi-dimensional layers  
 Asymmetrical patterns



**PREREGISTRATION IS MANDATORY**

CHECK OUR WEBSITE: [WWW.SPINEXPO.COM](http://WWW.SPINEXPO.COM)