

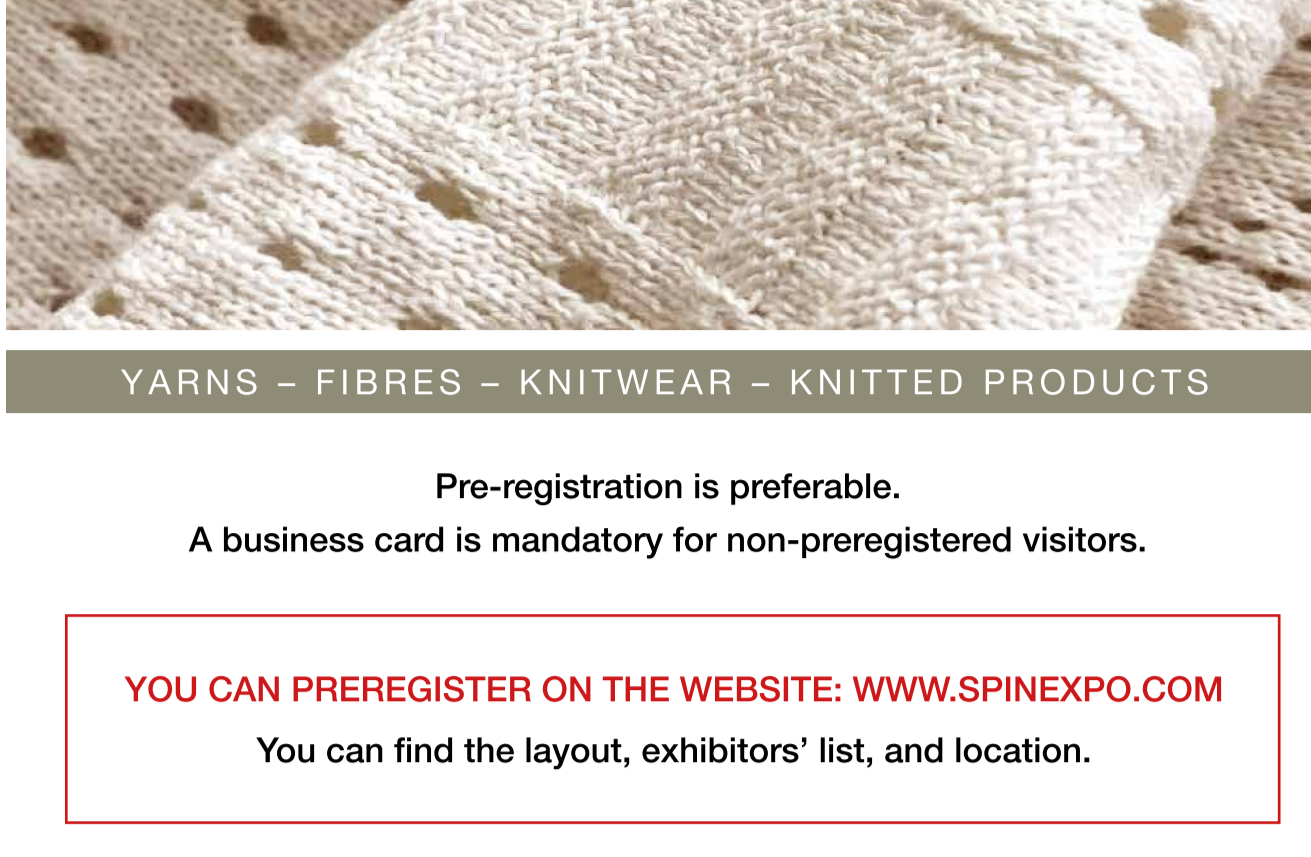
SAVE THE DATES SPINCLUB LOS ANGELES

**ORGANIZED BY SPINEXPO™
HOSTED IN THE TEXTILE SHOW**

24-25-26 SEPTEMBER 2024

COOPER DESIGN SPACE

860 SOUTH LOS ANGELES ST, SUITE 1100 - LOS ANGELES, CA 90014 USA



YARNS - FIBRES - KNITWEAR - KNITTED PRODUCTS

Pre-registration is preferable.

A business card is mandatory for non-preregistered visitors.

YOU CAN PREREGISTER ON THE WEBSITE: WWW.SPINEXPO.COM
You can find the layout, exhibitors' list, and location.

HOURS OF OPENING:

DAYS 1 & 2: 9.00 A.M TO 5.00 P.M - DAY 3: 9.00 A.M TO 4.00 P.M

Organized by a team of textile professionals, SPINEXPO™ was launched in Shanghai in March 2002. It presented a panel of 70 European exhibitors, complemented by a few Japanese and two Chinese companies.

In 2010, the proportion was reversed, with the addition of some twenty knitwear manufacturers. The trade show spawned partnerships, including joint ventures between Italy, France, Spain, and China, Chinese companies' takeover of Italian and British spinning mills, stronger partnerships between spinning and knitwear manufacturers, and flat and circular knitting machine manufacturers.

Over the past 24 years, SPINEXPO™ has evolved into a biannual event, now showcasing the work of 200 exhibitors and placing a strong emphasis on knitwear. This growth is a testament to the industry's evolution and SPINEXPO™'s continued relevance.

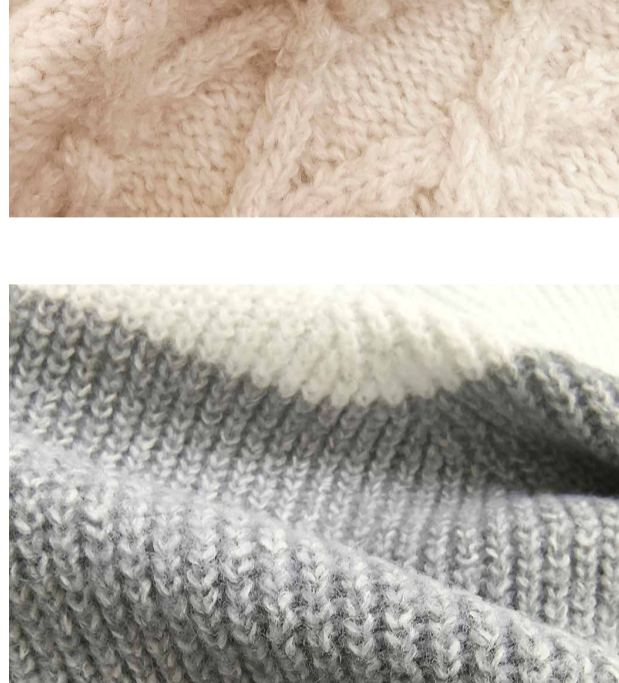


SPINNERS' PROFILES AT THE SHOW

SPINEXPO™ IS DELIGHTED TO PRESENT THE PROFILE OF A FEW SPINNERS EXHIBITING IN LOS ANGELES AT THE COMING TEXTILE SHOW AND THEIR BEST-SELLING PRODUCTS FOR THE A/W 25-26 SEASON. THE PRODUCTS GARNERED SUCCESS AND ENTHUSIASM DURING THE JULY SHOWCASES IN PARIS, NEW YORK, AND HONG KONG.

LOYAL LIGHT

Loyal Light Fancy Yarns is a premier vertical yarn manufacturer



Since 1989, Loyal Light has been showcasing its novelty fancy yarn collections to mass market and fast fashion retailers and supplying sweater manufacturing demands worldwide. Loyal Light embodies a 100% self-owned vertical operation: recycled polyester fiber mill, yarn spinning, yarn dyeing, R&D and marketing team capable of adjusting to market trends, and a sample room to produce trends into garments/swatches.

Incorporating Dope Dyed* recycled polyester fibers into the collections, Loyal Light focuses on sustainable polyester fibers/filament production. Their long-term goal is to add even more sustainable/performance qualities to their polyester materials as they now have complete control of all their polyester's capabilities, responding to the desire for a healthier lifestyle.

*Dope-dyed polyester negates the water dyeing process by melting polyester pigment chips with GRS-certified recycled polyester chips. Negating the dyeing process saves 92.55% water compared to conventional hank/cone dyeing procedures.

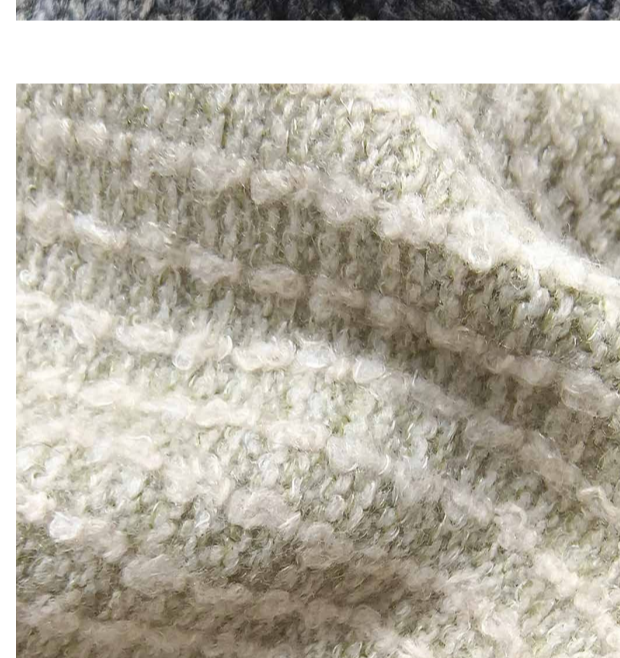
Bestsellers:

Poblano

50% Recycled Polyester, 29% Polyester (can be recycled), 17% Nylon, 4% Spandex - Count: 1/12nm

Poblano is an excellent option for a cotton replacement yarn and suitable for multi-gauge knitting. Softness is built into the yarn's DNA, and a super-soft hand feel can be expected even in jacquard or making intricate stitches, level 3 pilling resistance on ISO standard 7200 revolutions.

It is offered in 120 solid colors and heather colors to choose from.



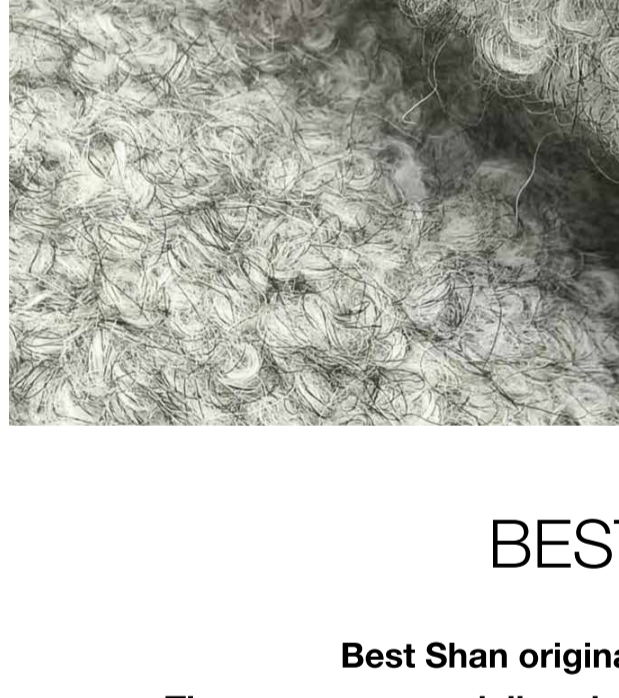
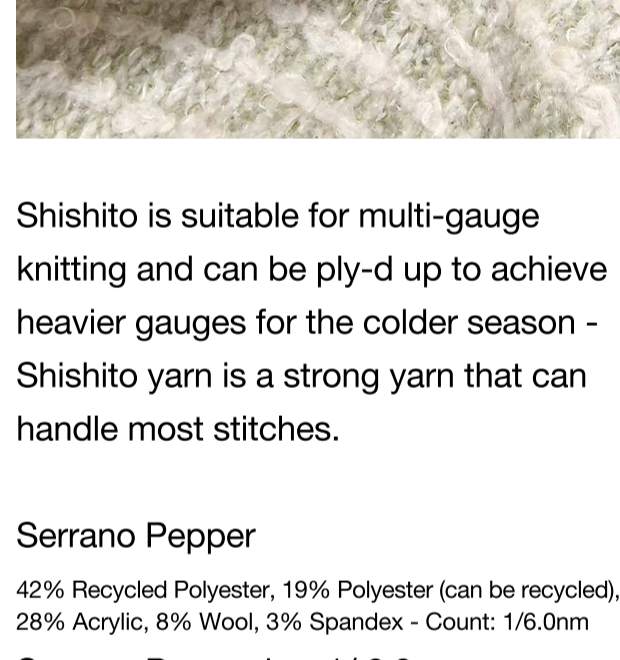
Shishito

50% Recycled Polyester, 23% Polyester (can be recycled), 24% Viscose, 4% Spandex - Count: 1/13nm

Shishito is made with more variations of Loyal Light fibers using a proprietary polyester fiber produced in-house.

Viscose is added to Shishito to give the yarn a more bodily appearance without sacrificing its hand feel.

For sustainability-minded brands, 100% of this yarn can be made with recycled materials, and FSC viscose will be utilized to meet sustainable demands.



Shishito is suitable for multi-gauge knitting and can be ply-d up to achieve heavier gauges for the colder season - Shishito yarn is a strong yarn that can handle most stitches.

Serrano Pepper

42% Recycled Polyester, 19% Polyester (can be recycled), 28% Acrylic, 8% Wool, 3% Spandex - Count: 1/6.0nm

Serrano Pepper is a 1/ 6.0 nm yarn with spandex for multi-gauge knitting. It is soft and bouncy, meeting the demand for loftiness and coziness.

Boucle yarn provides a full-body loopy texture to sweaters, while spandex provides light garment retention.

It offers 72 mélangé base colors, which are perfect for all ages.

BEST SHAN

Best Shan originated in Taiwan in 1992.

The company specializes in producing high-end fancy yarns, earning a reputation in the market for exceptional quality and unique designs

Their Fall/Winter collections feature luxurious materials such as South African mohair, Peruvian alpaca, Australian wool, and other fibers. Their yarns are soft and comfortable and offer excellent warmth, making them highly favored by customers worldwide.

Best Shan continuously innovates and evolves as an industry leader, striving to contribute to environmental protection and sustainable development.

They use the most advanced technologies and the highest quality raw materials to ensure that every product meets the highest quality standards.

They believe in the importance of sustainable development and actively adopt eco-friendly materials and processes that protect the environment while enhancing product quality.

Their best sellers for the AW 25-26 season are:

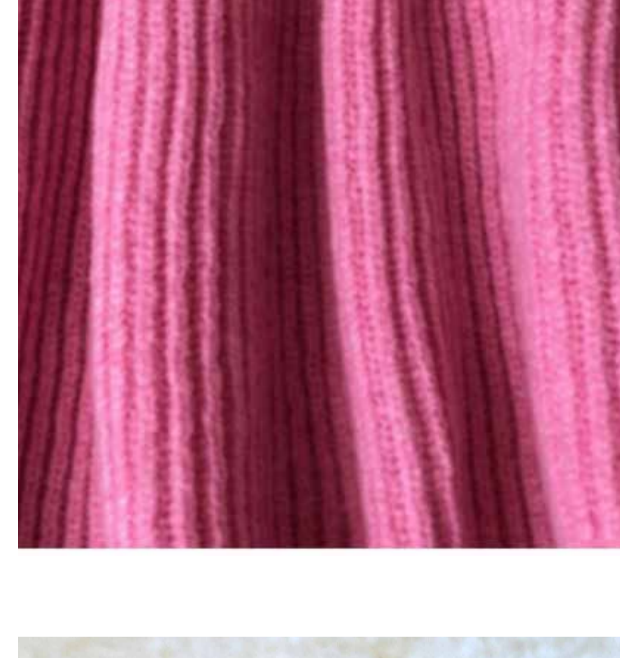
Finechenille

(100% Cotton Chenille Yarn) 1/16 mm

This fine cotton chenille yarn is renowned for its incredibly soft and plush texture, offering comfort and breathability.

It is perfect for crafting jackets and home wear. The unique texture adds a luxurious feel, making it suitable for anyone.

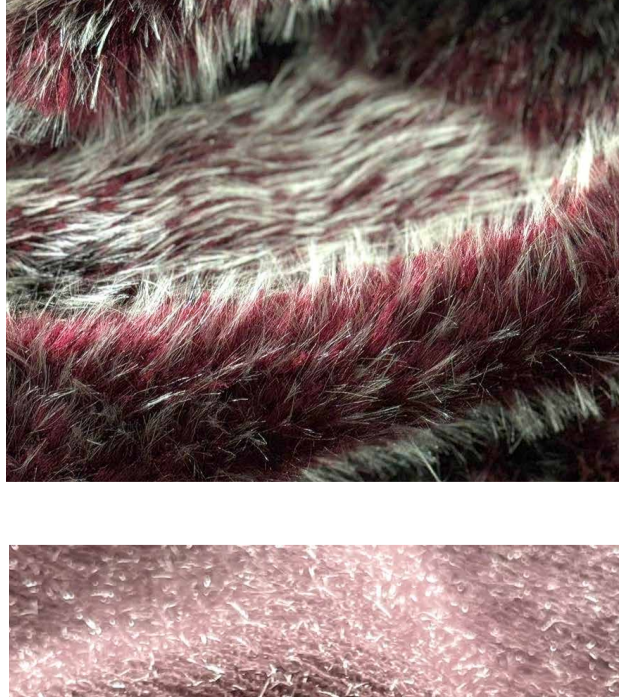
Its durability and easy maintenance make it ideal for everyday use.



Woolfeather

87% Wool Extrafine 13% Nylon 1/1.6nm

Best Shan's Woolfeather is designed to create a fluffy, warm texture like a teddy bear jacket. This yarn is perfect for cozy sweaters, jackets, and accessories that provides comfort and warmth. Its unique blend ensures durability and elasticity while maintaining a soft and luxurious feel.



Mink

79% Viscose 21% Polyester 1/1.1nm

Best Shan's Mink is crafted to replicate real mink fur's luxurious look and feel without harming animals. Made from a blend of viscose and polyester, this yarn offers a realistic fur effect that is both warm and high-end.

It is perfect for creating elegant garments and accessories that combine luxury and ethical values. The yarn is cost-effective and maintains a sophisticated appearance, making it a popular choice among fashion-conscious consumers.

Victoria

(fancy yarn) 60% Lurex (Nylon) 40% Nylon 1/15 nm

Victoria is a blend of nylon and nylon. It adds a touch of sparkle and glamour to any project. This yarn creates a shiny and eye-catching effect, perfect for evening wear, holiday decorations, and festive accessories. The yarn is durable and easy to work with, making it a popular choice for those looking to add a bit of shimmer to their creations.

