

# SAVE THE DATES

## SPINEXPO™ SHANGHAI

3-4-5 SEPTEMBER 2024

WORLD EXPO EXHIBITION & CONVENTION CENTER

1099 GUOZHAN RD, PUDONG - SHANGHAI - CHINA

**HOURS OF OPENING:**

9.00 A.M. TO 6.00 P.M. (5 SEPTEMBER: 4.00 P.M.)



YARNS - FIBRES - KNITWEAR - KNITTED PRODUCTS

210 TEXTILE SPINNING AND KNITWEAR EXHIBITORS PRESENT THEIR AUTUMN / WINTER 2025-26 COLLECTIONS.

SPINEXPO™ is a select international exhibition in the spinning and knitwear sectors, held in Paris, New York, Shanghai, and, for the first time this year, Los Angeles.

SPINEXPO™ is attended by specialist spinning exhibitors.

All exhibiting companies have obtained international traceability labels, are partners in the recycling industry, and promote energy-saving in manufacturing processes.

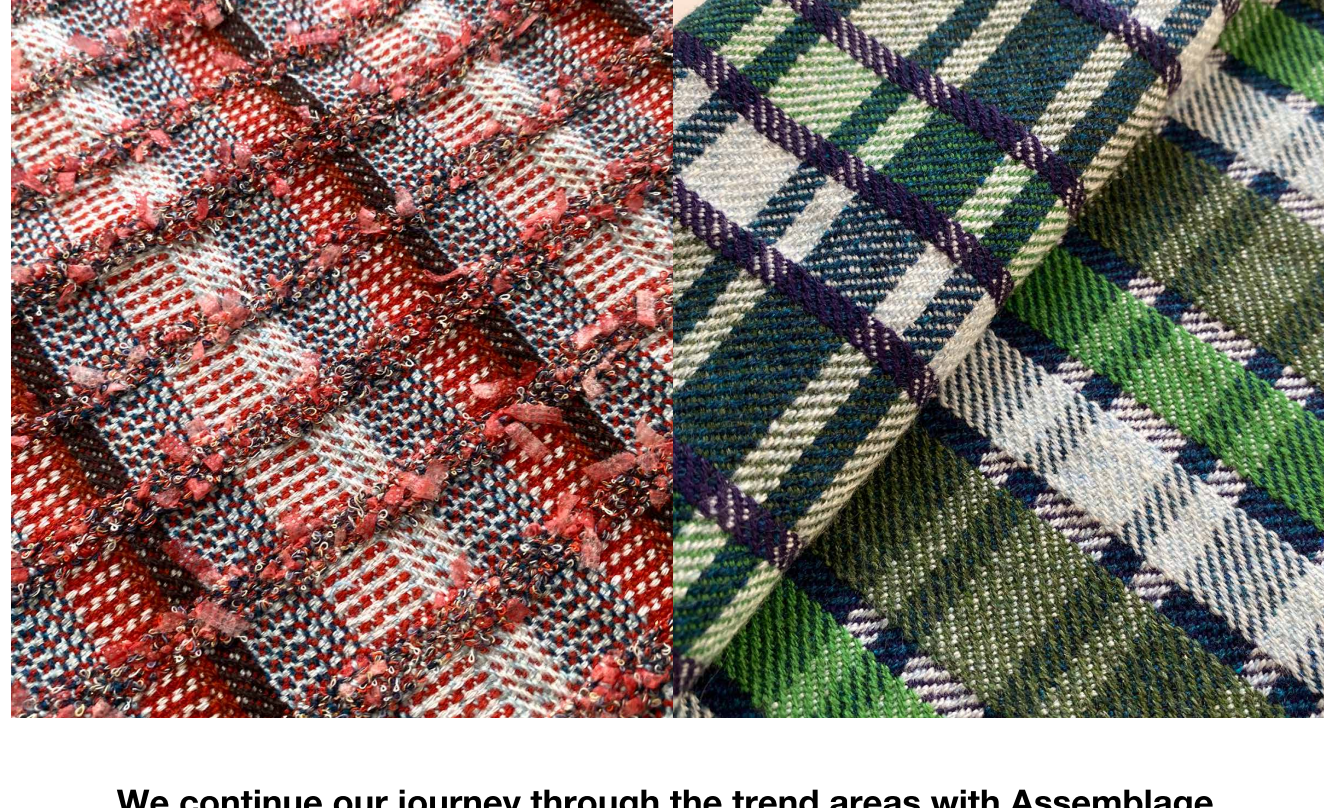
SPINEXPO™ also hosts an extensive range of companies specializing in knitwear design and manufacture. Most of these have their collections and a Research and Development department capable of working directly with international brands.

SPINEXPO™ presents innovative trend areas thanks to a team of designers who are specialists in their technical skills and expertise. They interpret the trends showcased at the event using the yarns of the exhibiting companies.

PRE-REGISTRATION IS MANDATORY.  
THERE IS NO REGISTRATION ONSITE.

**TRENDS AT SPINEXPO™ (PART 2)**

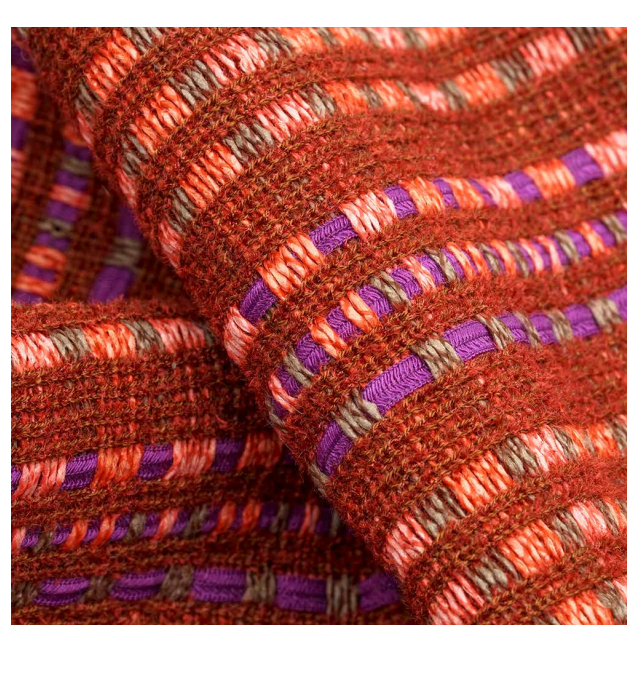
### ASSEMBLAGE



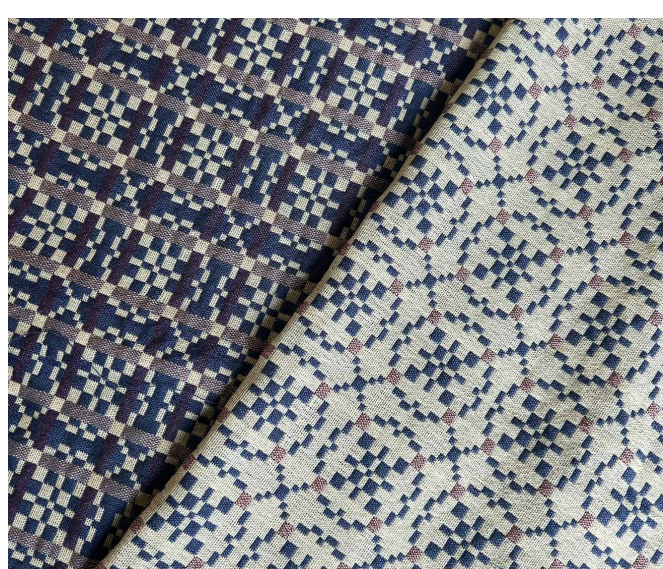
We continue our journey through the trend areas with **Assemblage**, a blend of tradition and eclecticism with the innovation of classic materials applied to the heritage of traditional tweeds, herringbones, tartans, and plaids, handed down from generation to generation but completely renewed by new materials, new blends, and new colors energized by bright or acidic colors, which optimize their classic feel. This is a nod to the sobriety of traditional fashion, brought to life by the mix of unexpected color combinations.



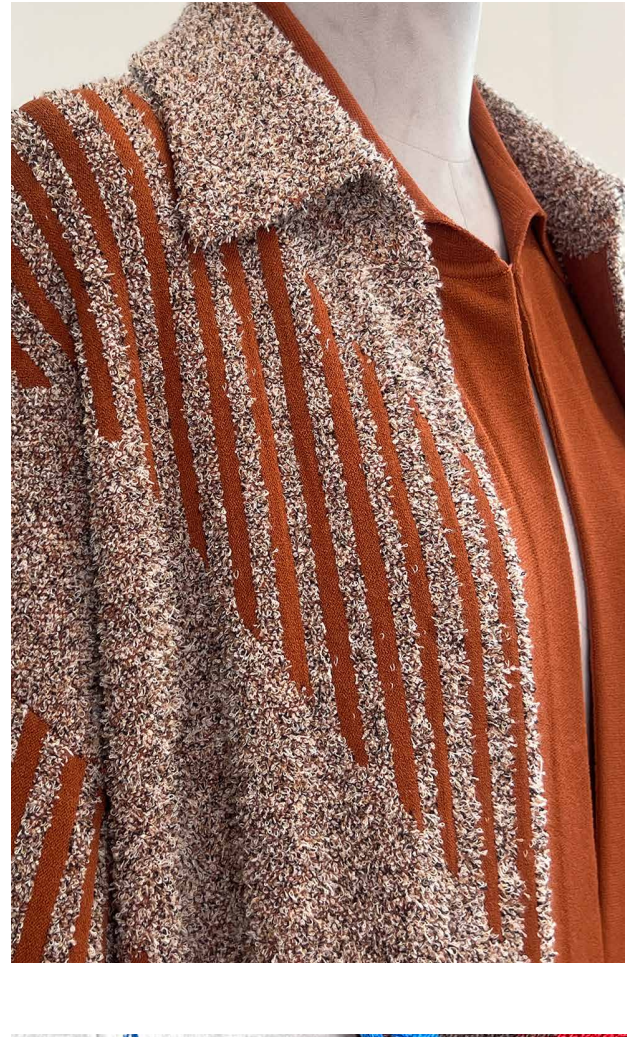
Inspired by the heritage and staying true to the essence of traditional patterns, **Laura McPherson** played with significant woven fabrics such as tartans, plaids, and tweeds reimagined through the knit. Checks vary in scale; the color is layered and worked through the stitch and needle punching. Tuck stitches, plaiting, and hand stitching allow for color to be complex and fun in some areas and clean and modern in others. There is a focus on traditional Fair Isle designs, which are reimagined and tweaked with a new and playful use of color, bringing a contemporary twist. Bold hues and unexpected color combinations reinvigorate these traditional patterns.



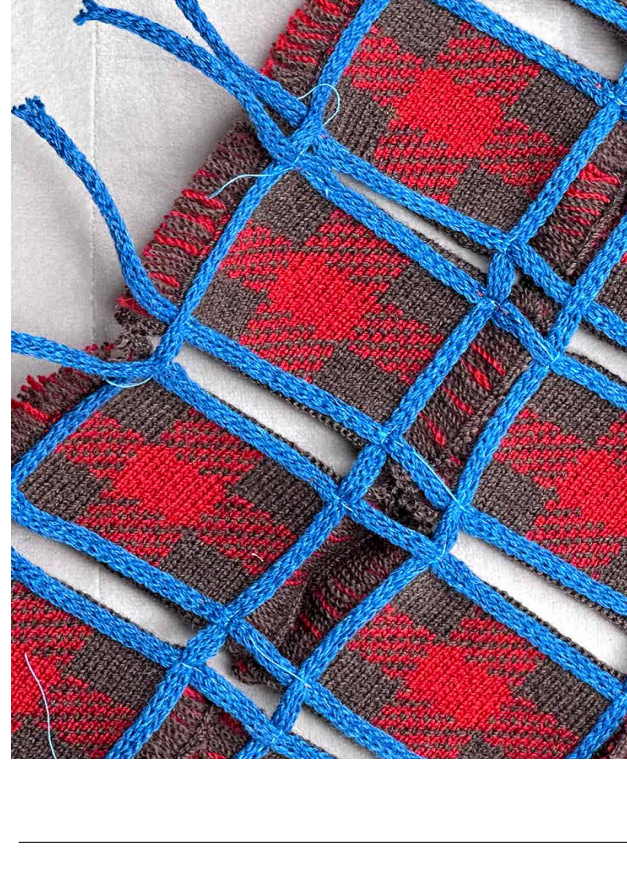
**Shasha Wong's** main idea was to blend tradition with innovation, giving a modern twist to a traditional pattern. She used classic Welsh blanket patterns for this series as the focal point. The patterns have been simplified and refined, with the removal of color and a focus on black-and-white contrast to make a more powerful statement. Teaming up with Shasha, **Kemi Clark** was also inspired by traditional Welsh blankets, a British heritage product manufactured predominantly on a small or domestic scale. This industry worked on a small number of established designs, and in parts of Britain, they are ubiquitous. The textile industry in Wales is predominantly a cottage industry grown through and from families and communities, as necessary to a community as fishermen or farmers. In the last century textile manufacturing



within Wales has been in continued decline. In 1926, there were 217 working textile mills; today, there are just five. This collection draws on some of the designs and history of this vital part of British weaving history, reworking and paying homage to Caernarfon, Dyffryn, and Pennsylvania. Reviving these designs in a set of cloths that offer an abundance of end uses involving bold color and scale choices to add interest and statement.



For **Steven OO**, Assemblage is about modernizing traditions, and he broke the trend down into three subcategories: Tweeds, Plaids, and Argyles. Using textural yarns with inlay methods mimicking weaving, he creates textiles resembling woven fabrics. He also modernizes traditional plaids and argyles by playing with scale and technique. Silhouettes are focused on wearability, and most of the looks are paid with knitted shirts to give a nod to the preppy vibe of the trend. Using quality yarns from Yarns & Colors, Orient Hongda, and M.Oro, he attempts to push the concept of unisex through the showcase of one male and one female per subcategory.



**DON'T FORGET**

NEW SPINCLUB

## LOS ANGELES

24-25-26 SEPTEMBER 2024

COOPER DESIGN CENTRE

860 SOUTH LOS ANGELES STREET, SUITE 1100 - LOS ANGELES CA 90014

PREREGISTRATION IS MANDATORY

CHECK OUR WEBSITE: WWW.SPINEXPO.COM