

SAVE THE DATES

SPINEXPO™ PRESENTS

SPINCLUB PARIS

2 & 3 JULY 2024

BASTILLE DESIGN CENTER

74 BD RICHARD-LENOIR - 75011 PARIS - FRANCE

HOURS OF OPENING: 9 A.M. TO 6 P.M. (3 JULY: 5 P.M.)

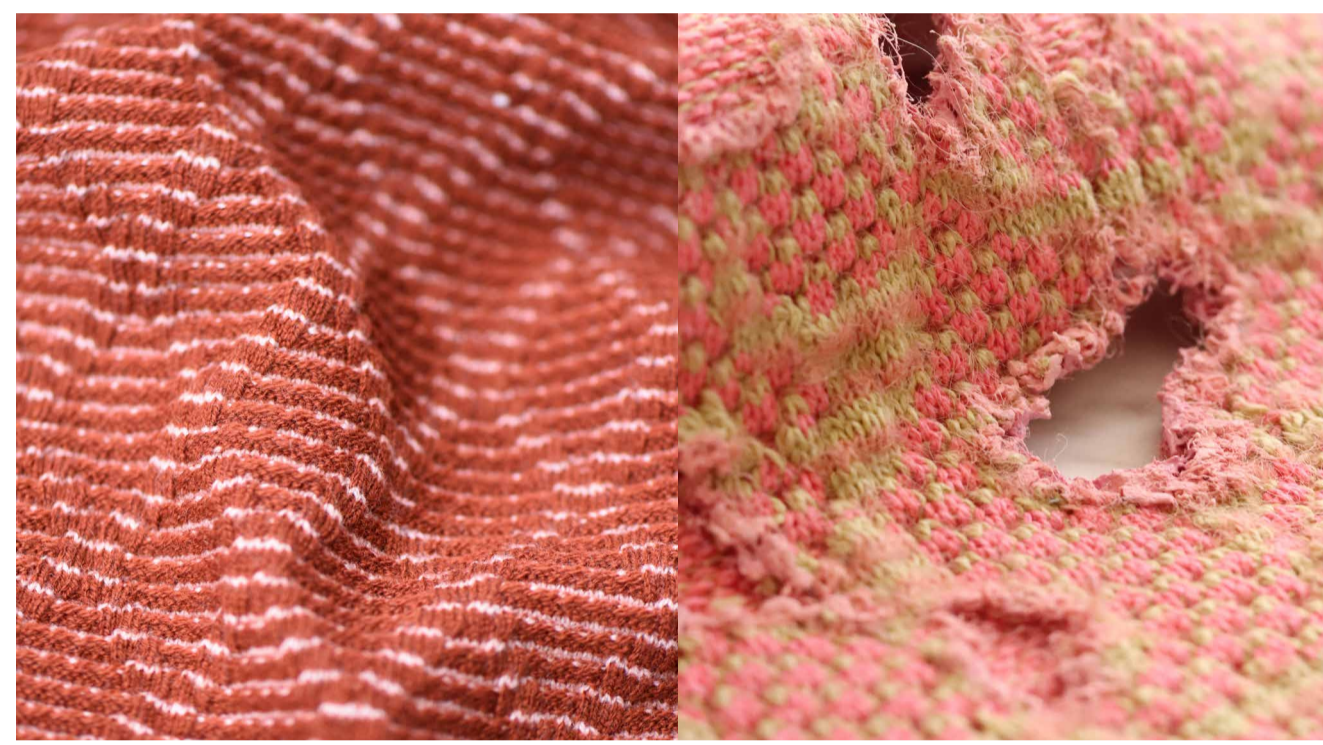


YARNS - FIBRES - KNITWEAR - KNITTED PRODUCTS

A MEETING PLACE FOR SPINNERS AND KNITWEAR MANUFACTURERS AND THEIR CUSTOMERS

PRE-REGISTRATION: WWW.SPINEXPO.COM

Open to customers only. Suppliers are not invited.



COMPANY PROFILES

BEST SHAN

With a rich history dating back to 1992, BEST SHAN Co, Ltd. is a Taiwan-based company that has honed its craft in producing high-end fancy yarns. Their long-standing expertise and commitment to exceptional quality and unique designs have earned them a reputable position in the market.

BEST SHAN's Fall/Winter uses high-quality natural materials such as mohair, alpaca, wool, cashmere, yak, and washi paper, all of which are known for their eco-friendly properties. Blending cotton with these fibers resulted in versatile materials suitable for all seasons, providing both breathability and warmth. Advanced techniques ensure yarns are lightweight, soft, and fluffy, enhancing the wearing experience.



BELOW ARE NEWLY DEVELOPED YARNS:

Suitable for all seasons

- COSSET:** 6% Yak, 35% Organic Cotton, 19% Livaeco Modal, 40% Paper
- ECOYAK:** 10% Yak, 58% Organic Cotton, 32% Livaeco Modal
- PONNET:** 24% RWS Wool Merino, 19% Celys Polyester, 26% Paper, 31% Cotton
- SOLON:** 55% RWS Wool Merino, 45% Celys Polyester

Technological Innovation / Light and Fluffy

- AINE:** 15% Alpaca Superfine, 45% Wool Merino, 40% Nylon
- CHOPIN:** 60% Wool, 40% Nylon
- MASERU:** 30% Kid-Mohair, 30% Wool Merino, 40% Nylon
- DENIS:** 48% RWS Wool Merino, 39% Celys Polyester, 13% Nylon

Technological Innovation / Color Variations

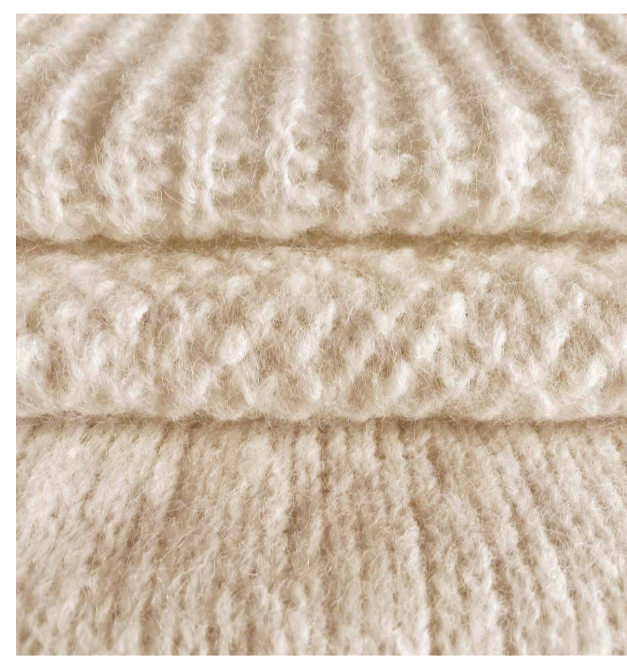
- COSTA-25:** 73% Cotton, 27% Nylon

Technological Innovation / Ultra-Fine

- DIOIS:** 57% Wool Superfine, 6% Cashmere, 37% Nylon

Incorporation of Fancy Elements

- SOLOMIX:** 54% RWS Wool Merino, 44% Celys Polyester, 2% Polyester
- FORME:** 24% Mohair, 33% Acrylic, 22% Lurex, 21% Nylon
- SANE:** 20% Paper, 13% Mohair, 18% Acrylic, 30% Nylon



ZHONGDING

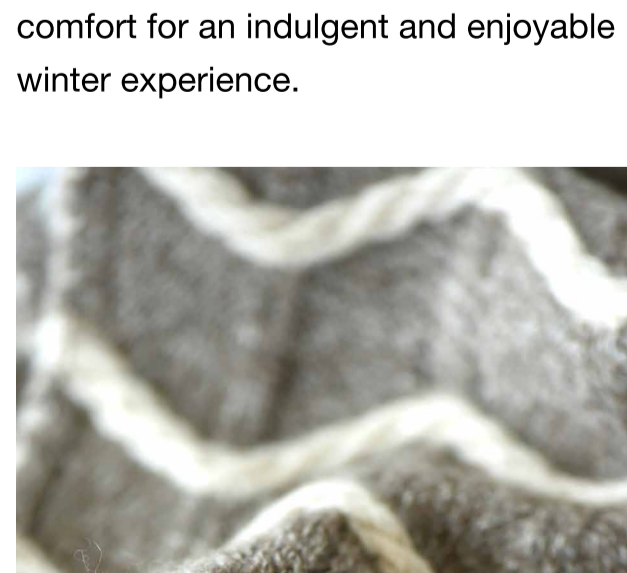
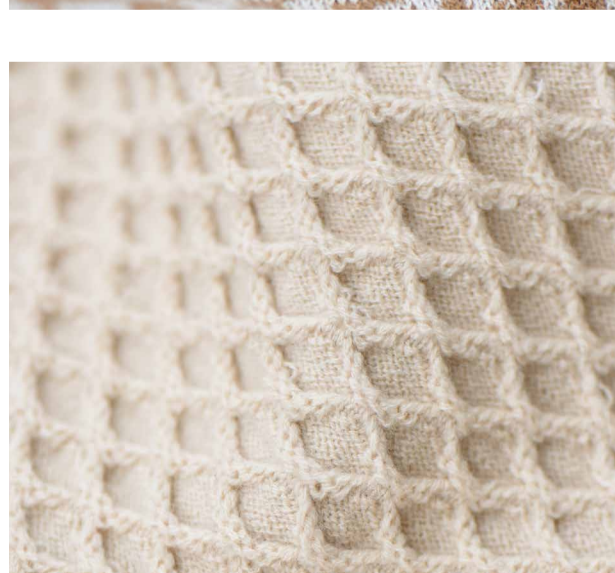
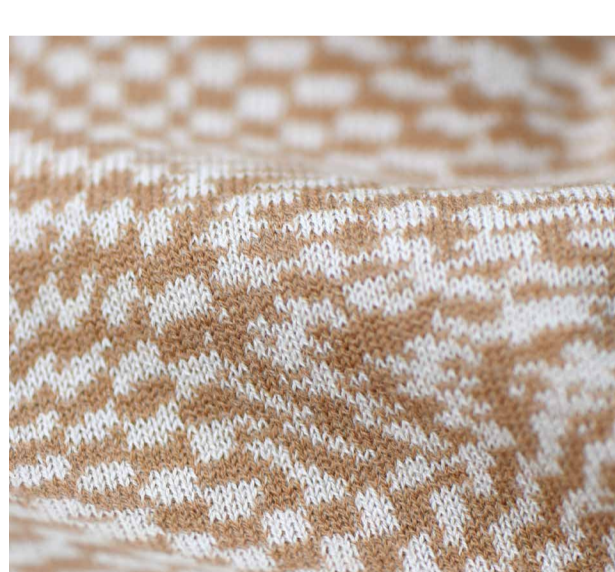
ZHONGDING AW25-26 COLLECTION incorporates precious fibers sourced from nature to craft soft and comfortable yarns, complemented by neutral tones and vibrant warm hues.

Prestigious CELESTE 2/68 Nm, 78% Cashmere, 22% PET and the KOS 2/58 Nm, 84% Ultrafine Merino Wool, 16% PET empower you to be ready for any situation. Both offer a non-irritating, lightweight, and springy fit while remaining suitable for gentle machine washing.

ZHONGDING AW25-26 collection introduces more distinctive variations:

- CELIA 2/50 Nm,** 80% cashmere, 20% PET,
- KOSTA 2/48 Nm,** 80% Ultrafine Merino Wool, 20% PET.
- BEBE 2/26 Nm** 100% Baby Cashmere with a fineness of 15.0 µm.

The luxurious richness of its texture and the soft sensation it provides deliver unparalleled warmth and comfort for an indulgent and enjoyable winter experience.



In 2024, ZHONGDING Luxury Cashmere's three 100% cashmere yarn products: Lullaby, Elegance, and Serenity - were awarded the latest international carbon neutrality certification, ISO-14068-1, by TÜV Süd, making it the first domestic textile enterprise to receive this certification. With 2060 as its target, ZHONGDING has not just formulated both short-term and long-term carbon neutrality goals but is actively implementing a series of emission reduction and carbon mitigation measures. These efforts aim to achieve "cradle-to-gate" carbon neutrality under the principle of "prioritizing emission reduction and carbon sequestration over offsetting," and to create low-carbon and green products with brands.

PREREGISTRATION IS MANDATORY

CHECK OUR WEBSITE: WWW.SPINEXPO.COM